

ANGLOPHONE WEST SCHOOL DISTRICT



Sustainability Study

Forest Hill Elementary School



Public Meeting #1 Agenda

- Introductions
- Review of Provincial Policy 409 Multi-Year School Infrastructure Planning
- Presentation of Information – Forest Hill Elementary School
- Question and Answer
- What's Next?
 - o Online Resources and Feedback
 - o Next Meetings



Provincial Policy 409

Multi-year School Infrastructure Planning

- Outlines a number of responsibilities to do with facilities in our system
- Sections 6.4, 6.5 and 6.6 are relevant for sustainability studies
- Three Public Meetings
 - Meeting 1 – Presentation of information from District regarding school (Policy 409, 6.4.4)
 - Meeting 2 - Presentation from stakeholders regarding their thoughts on the sustainability of the school and relevant factors
 - Meeting 3 – Final review of information by District Education Council (DEC) and subsequent motion on next steps



Provincial Policy 409

Multi-year School Infrastructure Planning

- Three Possible Outcomes
 - o Maintain the status-quo at Forest Hill Elementary School
 - o Provide for repairs to Forest Hill Elementary School
 - o Build a new school, closing Forest Hill Elementary School and combine with Liverpool Street Elementary School for students continued education.
- Public meetings provide the DEC with information to make an informed decision.



*Excited. Involved.
Prepared.*

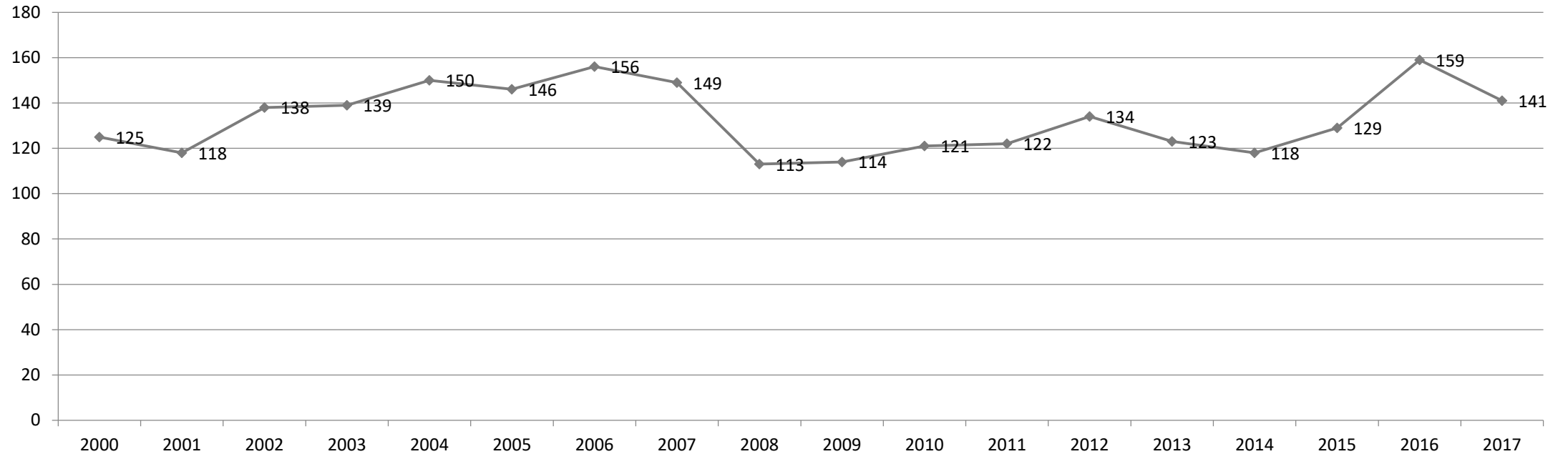
Information to be Presented

- Enrollment
- Quality of Education Programs & Services
- Provincial Assessment Results (NA)
- Transportation
- Finances
- Impact on Other Schools
- Building Challenges
- Economic Development
- Vision for New School



Enrollment

School Enrollment Trends 2000 to Present



*Excited. Involved.
Prepared.*

Enrollment By Grade Level: Forest Hill Elementary School

	2011	2012	2013	2014	2015	2016	2017	2018 Projected August
K	60	71	56	60	71	78	65	64
1	62	63	67	58	58	81	76	65
Total	122	134	123	118	129	159	141	129



*Excited. Involved.
Prepared.*

Quality of Education Programs & Services

Educational Staff – Forest Hill Elementary School

	2017-2018		2018-2019	
Full Time Equivalent (FTE)	Provincial Staffing Formula 2017-2018	Actual 2017-2018	Provincial Staffing Formula 2018-2019	Projected August 2018-2019
Classroom Teachers	8.80 FTE	8.80 FTE	8.80 FTE	8.80 FTE
Administration	0.51 FTE	0.50 FTE	0.52 FTE	0.60 FTE
Guidance	0.28 FTE	0.20 FTE	0.26 FTE	0.20 FTE
Resource	0.78 FTE	0.80 FTE	0.72 FTE	0.80 FTE
Additional FTE	0.00 FTE	0.00 FTE	0.00 FTE	0.00 FTE
Total	10.37 FTE	10.30 FTE	10.30 FTE	10.40 FTE



*Excited. Involved.
Prepared.*

Maximum Class Sizes

Grade Level	Maximum Number of Students
K-2	21
3	26
K-3 Combined Classes	16



Quality of Education Programs & Services

Student Teacher Ratio

	Provincial Staffing Formula		Actual	
Year	Total Number Student: Ratio	Student: Teacher	Total Number Student: Ratio	Student: Teacher
2017-2018	141:10.37	13.60:1	141:10.30	13.69:1

	Provincial Staffing Formula		Projected August	
Year	Total Number Student: Ratio	Student: Teacher	Total Number Student: Ratio	Student: Teacher
2018-2019	129:10.30	12.52:1	129:10.40	12.40:1



Support Staff Information

Full Time Equivalent (FTE) 2017-2018	Forest Hill Elementary School
Educational Assistants	90 hours per week (3.0 FTE)
Administrative Assistant II	36.25 hours per week (1.0 FTE)
School Library Worker I	NA
Custodian I	40 hours per week (1.0 FTE)



Support Staff Information

Projected Full Time Equivalent (FTE) 2018-2019	Forest Hill Elementary School
Educational Assistants	240 hours per week (8.0 FTE)
Administrative Assistant II	36.25 hours per week (1.0 FTE)
School Library Worker I	NA
Custodian I	40 hours per week (1.0 FTE)



Core Curriculum and Supports

	Early French Immersion	Late French Immersion	Gymnasium	Music/Fine Arts/Specialists	EST-Resource	EST-Guidance	EST-Literacy	EST-Math	EST-French Immersion	EST-Science	Science Lab	Computer Lab
Forest Hill Elementary School	Yes	No	Yes, not regular size	No	Yes	Yes	4 week block by District EST-L 17-18 Projected 6 week by District EST-L 18-19	4 week block by District EST-N 17-18 Projected 4 - 6 week block by District EST-N 18-19	No	No	No	No



Quality of Education Programs & Services

- Grade K students from Forest Hill Elementary School can choose to enter the English Prime or Early French Immersion programs at Forest Hill Elementary School beginning in Grade 1.
- Grade 1 students from Forest Hill Elementary School enter Liverpool Street Elementary School in Grade 2 for the English Prime and French Immersion programs.



Special Events that Encourage Community School Partnerships

- PSSC
- Parents events such as:
 - Christmas Fair
 - Cultural Showcase
 - MCAF Presentations
- Field Trips: Mactaquac, DEC, Apple Orchard
- Christmas Concert
- Spring Fling
- Career Days
- French Concert
- Breakfast Program
- Backpack Program
- School Handbook
- Backpack Program
- TNB Productions

For a sample of community activities and school partnerships as presented by the school and for school newsletters, please view the school's website

<http://secure1.nbed.nb.ca/sites/ASD-W/FHES>



*Excited. Involved.
Prepared.*

Student Voice

- Student Forums
- Inquiry-based education
- Wonderful Wednesdays



*Excited. Involved.
Prepared.*

Provincial Assessment Results

Grade 2 Reading Forest Hill Elementary School

Year	Forest Hill Elementary School	District	Province
2011-2012	N/A	78.0 %	79.1 %
2012-2013	N/A	80.3 %	79.5 %
2013-2014	N/A	76.8 %	77.5 %
2014-2015	N/A	77.3%	76.9 %
2015-2016	N/A	75.2 %	73.8 %
2016-2017	N/A	75.9%	75.7%
2017-2018	N/A		



School Benefits

- All school staff know all children.
- Combined grade level Professional Learning Communities (PLCs) are in place.
- All staff have a strong knowledge of students at risk.
- All activities and the environment can be tailored to K/1 age group.



*Excited. Involved.
Prepared.*

School Challenges

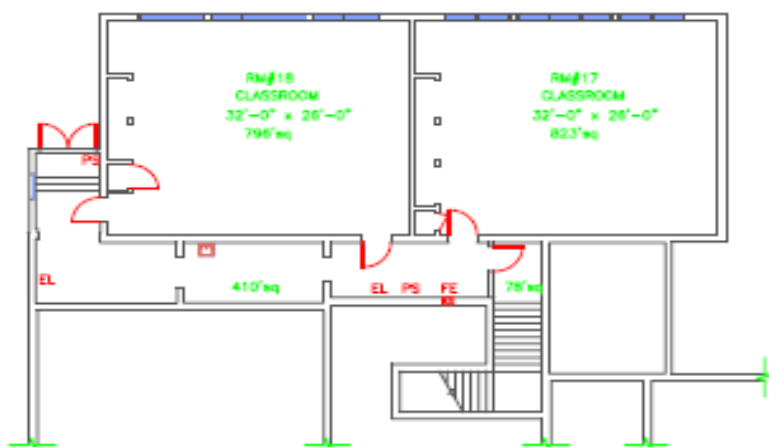
- Specialist teachers (administration, resource, guidance) have a large percentage of time dedicated to teaching in the classroom and not available during a crisis.
- High staff turnover
- Lack of older students to work as peer mentors
- Lack of collaboration between K/1 teachers and higher grade teachers
- Not wheelchair accessible
- A smaller staff means teachers take on many responsibilities with committees.



Building Summary

- Wood framed one-story with partial basement level constructed in 1955. The school has an area of 1,119 square metres.
- The school has 7 classrooms, with 2 classrooms located on the lower level, and one modular classroom.
- There is no cafeteria and the gymnasium is not regulation size.

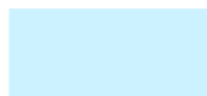




FIRST FLOOR PLAN
(SCALE: 1/16"=1'-0")



STORAGE



MECHANICAL / ELECTRICAL

NOTE

NO.	REVISIONS / REVISIONS	DATE	PAR / BY

Department of Education
Ministère de l'Éducation



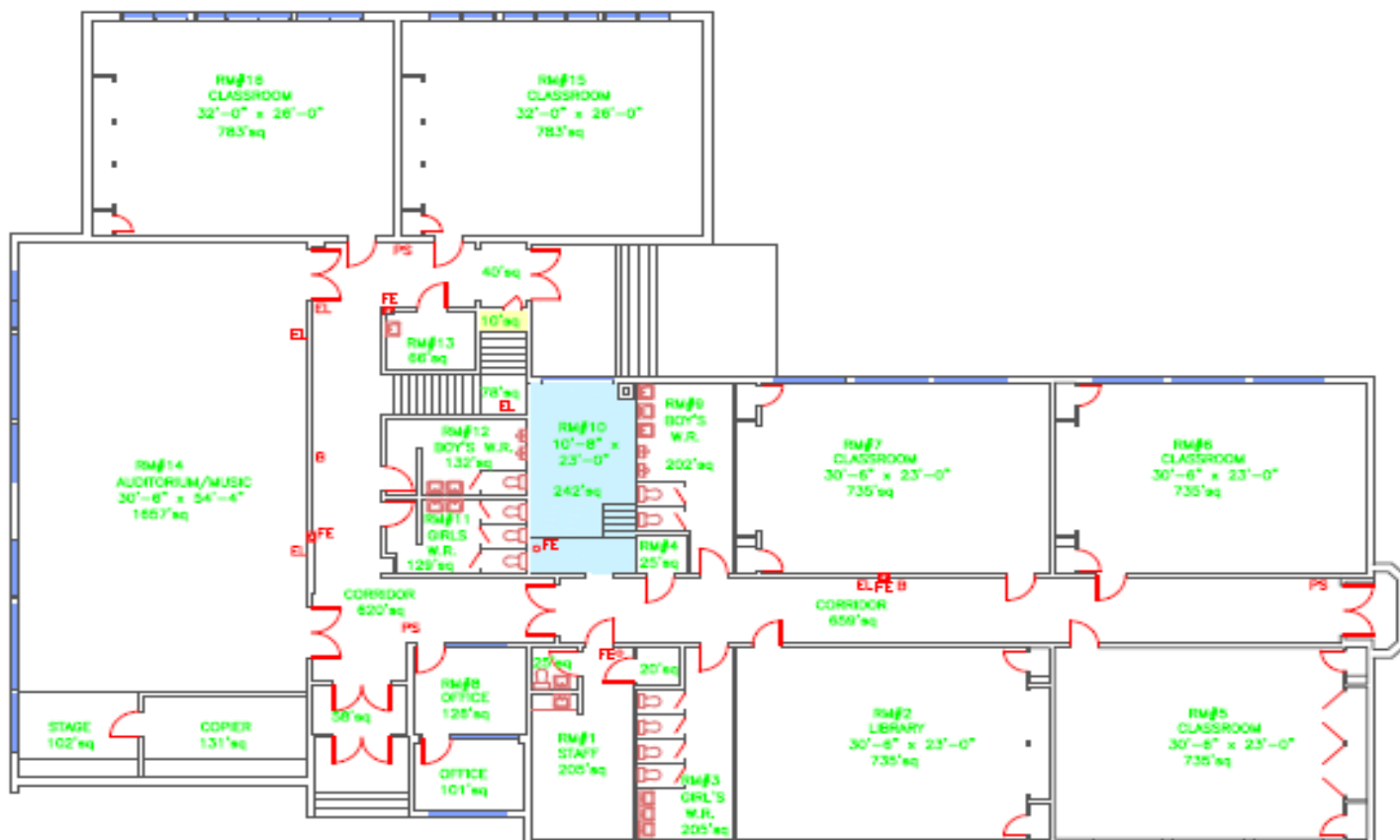
Forest Hill School
548 Forest Hill Road
Fredericton, NB
- School District 18 -

ESSELLE / SCALE 1/16" = 1'-0"	DATE JAN 21, 08
----------------------------------	--------------------

DOSSIER D.A.G. / C.A.D. FLE Forest Hill Elementary.DWG	NO DU DESSIN / DRAWING NO.
---	----------------------------

DESSINÉ PAR / DRAWN BY C. STENES	
-------------------------------------	--

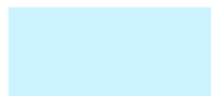
APPROUVÉ PAR / APPROVED BY 	A1
--------------------------------	----



SECOND FLOOR PLAN
(SCALE: 1/16"=1'-0")



STORAGE



MECHANICAL / ELECTRICAL

NOTE

NO.	REVISIONS / REVISONS	DATE	PAR / BY

Department of Education
Ministère de l'Éducation

New Brunswick

TIRE / TITRE
Forest Hill School
548 Forest Hill Road
Fredericton, NB
- School District 18 -

ÉCHELLE / SCALE 1/16" = 1'-0"	DATE JAN 2/08
DOSSIER ÉLAG. / CAD. FILE Forest Hill Elementary/DS	
DESSINE PAR / DRAWN BY CLT/ENR	NO DU DESSIN / DRAWING NO. A2
APPROUVE PAR / APPROVED BY XXXX	

Functional Capacity

Functional Capacity Data	Student Enrollment	Number of Classrooms	Classrooms In Use	School Capacity	Capacity Rating
Based on 21 students per class	141	7	6	147	95.9%



*Excited. Involved.
Prepared.*

Building Challenges

- There is no mechanical ventilation in the school, except for exhaust fans serving the washrooms.
- There is no sprinkler system.
- There is asbestos present in both wall and ceiling plaster, some floor tiles and pipe insulation. This is managed safely by trained staff but can make renovation work challenging.
- Only the upper level is wheelchair accessible.
- Parking is tight with some gravel parking.



Capital Investments

School Year	Scope of Work	Cost
2012-2013	Flooring	\$ 9,400
2016-2017	Exterior doors	\$ 20,000
2016-2017	Exterior Windows	\$ 80,000
Total		\$ 109,400



*Excited. Involved.
Prepared.*

Physical Plant Status

School Physical Plant Review / Report by School

School: Forest Hill Elementary School (ASD-W)			Grades: Kindergarten, 1	Year Built: 1955	
ASD-W	School No: 2608	City/Village: Fredericton	Enrolment:141	Total Area (m2): 1119	
Mechanical and Electrical			Description	Priority	Est. Cost
Heating and Ventilation		Ventilation System	New ventilation system along with heating and controls upgrade	1	
Electrical		Electrical Supply and Distribution	Install twenty new receptacles and upgrade electrical supply and distribution	1	
			Sub Total (Category)		
Building Interior and Additions			Description	Priority	Est. Cost
Interior Alterations and Renovations		Washrooms	Upgrade one washroom. Convert to a universal washroom. Create additional storage space for custodial.	2	
Interior Alterations and Renovations		Classrooms	Upgrade floor and wall finishes and introduce storage solutions in the classrooms and corridor on the basement level.	3	
Interior Alterations and Renovations		Washrooms	Upgrade one kindergarten washroom and two Grade 1 washrooms.	3	
			Sub Total (Category)		
Building Exterior and Site			Description	Priority	Est. Cost
Site		Site Improvement	Sitework (parking lot upgrade and fencing)	3	
Building Envelope		Roofs	Re-cap roof #5, which was last replaced in 2000. Before budget is confirmed, DTI to verify scope of work.	3	
			Sub Total (Category)		
Fire Codes			Description	Priority	Est. Cost
Fire Prevention		Sprinkler System	Install a sprinkler system. School currently does not have a sprinkler system.	3	
Fire Prevention		Other	Replace interior doors with fire rated doors.	2	
			Sub Total (Category)		
				SCHOOL TOTAL	\$1,054,550.00



*Excited. Involved.
Prepared.*

Facilities Costs

Actual Costs			
	Fiscal Year	Fiscal Year	Fiscal Year
	2015/16	2016/17	2017/18
Facilities Costs			
Electricity	6549.39	8363.47	8884.14
Water/Sewage	1556.19	1774.48	1818.21
Garbage Removal	599.28	599.28	599.28
Snow Plowing	5550	5550	7448
Heating Fuel		0	0
Natural Gas	16972.14	14213.35	16099.29
Cleaning Supplies/Services	3527.99	2948.83	5384.88
Minor Repairs/Renovations	3947.82	6186.93	7357.04
Total	38702.81	39636.34	47,590.84



*Excited. Involved.
Prepared.*

Assigned Budgets

Actual Costs Fiscal Year 2017-2018

Assigned Budgets

Regular Instruction	\$11,092
Admin Support	\$2,737
Library	--
Teacher Working Conditions	\$2,162
Nutrition	\$1,471
Bilingual Learning Environment	\$400
Wellness Grant	\$1,694
Co/Extra Trips	\$576
PSSC	\$493
Total	<u>\$20,625</u>



*Excited. Involved.
Prepared.*

Forest Hill Elementary School Salaries

Actual Costs Fiscal Year 2017-2018

Salaries

Administration	\$13,291
Teachers	\$800,749
Admin Assistant	\$31,123
Educational Assistant	\$121,299
Custodian	\$36,854
Total	<u>\$1,003,316</u>



Forest Hill Elementary School Salaries

Projected Costs Fiscal Year 2018-2019

Salaries

Administration	\$13,428
Teachers	\$832,061
Admin Assistant	\$42,355
Educational Assistants	\$208,526
Custodian	\$38,698
Total	<u>\$1,135,068</u>



*Excited. Involved.
Prepared.*

Transportation Study

Forest Hill Elementary School

- Students in Grades 2-5 who reside in the Forest Hill Elementary School catchment area are bused to Liverpool Street Elementary School. Forest Hill Elementary School has French Immersion programming available.
- The morning school bus system has 5 buses transporting students within the Forest Hill Elementary School catchment area into the Forest Hill Elementary School.
- The afternoon school bus system has 3 buses transporting students within the Forest Hill Elementary School catchment area from Forest Hill Elementary School.
- There would not be any anticipated impact with regards to the number of school buses or drivers if Forest Hill Elementary School should close.



Transportation Study

Forest Hill Elementary School - Busing

School	Longest Ride In	Longest Ride Out	Earliest Pick-up	Latest Drop Off	Average Ride Time
Forest Hill Elementary School	33 MIN	40 MIN	7:40AM	2:30PM	9 Minutes
Potential Liverpool Street Area School	40 MIN	40MIN	7:21AM	3:34PM	15 minutes



*Excited. Involved.
Prepared.*

Transportation Study

Forest Hill Elementary School - Busing

	Distance to Forest Hill Elementary School	Distance to Potential New Liverpool Street Area School
Average Distance	1km	2.1km
Maximum Distance	2.3km	7km
Minimum Distance	0.2km	0.1km



*Excited. Involved.
Prepared.*

Our Vision for New School

A typical K-5 school for 500 students would like something like this:

- 24-28 classrooms (kindergarten and general)
- 1 early childhood development room
- Music room and performing arts room
- 3-4 project work areas
- 4 resource rooms
- Special care resource room and workroom
- Health room & multi-functional rooms



*Excited. Involved.
Prepared.*

Our Vision for New School

- Double gymnasium & single gym with auxiliary spaces
- Library and seminar room
- Stage, Cafeteria, kitchen
- Guidance and visiting professionals' offices
- Administration offices and storage
- Personnel centre/staff room with lounge and work area
- Main custodial work area & recycling area
- Dedicated parent/bus drop areas
- Outdoor playground, hard surface play area & playing field



*Excited. Involved.
Prepared.*

Possible Considerations - Impact

- Maintain the status-quo at Forest Hill Elementary School
- Provide for repairs to Forest Hill Elementary School
- Build a new school, closing Forest Hill Elementary School and combine with Liverpool Street Elementary School for students continued education.
- Economic Development impact was considered but the scenario of building a new school would negate any negative impacts.



Scenario

	Forest Hill Elementary School (K-1)	Liverpool Street Elementary School (2-5)	New School (K-5) (with Forest Hill Elementary & Liverpool Street Elementary School students)
Projected 2018-2019 enrollment	129	340	469
Projected 2018-2019 # of homerooms	8	16	24
Projected 2018-2019: Classroom Teachers FTE	8.80	17.60	26.40
Administration FTE	0.60	1.40	1.90
Guidance FTE	0.20	0.70	1.00
Resource FTE	0.80	2.00	2.70
Additional FTE	0.00	0.00	0.00
Projected 2018-2019 Teacher FTE	10.40	21.70	32.00



Questions and Answers

- Our presenters are ready to take questions from the floor.



*Excited. Involved.
Prepared.*

What Happens Next

- Public Meeting #2 – Nov. 15 at 6:30 p.m. at this school.
- Public Meeting #3 – Jan. 24, 2019 at 6:30 p.m. at FHS
- DEC makes a recommendation on school's future
- Government considers the recommendation and makes a decision.
- Visit our website for further details and information on sustainability studies at www.asd-w.nbed.nb.ca



*Excited. Involved.
Prepared.*